



Munglinup Primary School News Sheet

TERM 2 WEEK 10

Tuesday 27th June

*Respect, Courage,
Persistence, Self-Belief*



Term 3, 2023

*Monday 17th July
Staff and Students return
to school*

*Tuesday 18th July
Excursion to Jerdacuttup
PS for Red Cross
Pillowcase Program*

*Friday 4th Auguts
Jeans for Genes day*

*Cascade Science trips –
every Friday*

Principal's Report

"The end of this term has come upon us very quickly" everyone seems to be saying! Thinking about it I could not agree more. It seems only last week that I arrived in Mungy to start the next chapter in my career.

Just to confirm we now have Catherine Harman two days per week as our EA, and Rhianna Watts is returning until the end of the year teaching two days per week. We have been very fortunate to maintain the consistency of staff, I know many colleagues who are finding staffing problematic.

Munglinup has been in the news of late in regard to the GROH house that was rescinded. The discussions continue and I am sure Marnie Lawrance will inform us if there is any news about this. Thank you for understanding that as DOE employees school staff are unable to comment on the issue.

School reports have been sent home and I was impressed with the achievements and effort that our students have put in this semester. I hope you had time to go through the report with your child and celebrate their progress, it is important that their effort and progress is acknowledged by parents.

The Level 3 Principal's conference was very informative. I have made some strong connections with Principal's from other networks and we spent many of the sessions sharing our expertise and experiences. One of the key phrases that stuck with me is 'You can only move forward to the speed of trust'. This really is the core business of a Principal's role – building trustful relationships to so we can work together to improve outcomes for our students.

By the time this goes to print the Canberra camp will be almost over. Thank you to Mrs Sills who has spent hours preparing for this, and a sincere thanks to the parents who have supported it despite some apprehension. You will certainly be ready for a well earned holiday!

Enjoy the holiday break – safe travels to those returning from the Canberra camp and to those families travelling on holidays. I will be returning to Mungy after my travels on 10th July. I am looking forward to Term 3 and all the activities we have planned.

Wendy Hughes
A / Principal

Student Reports

Visiting Teacher Mr Saul

On Monday the 19th June, Mr Saul came to teach Lincoln and Conan because the 5/6's were with Mrs Sills on excursion.

First, we completed Heggerty before moving to Reading. We read Edwina the Emu.

A customer wanted 10 eggs for breakfast, and she left 10 eggs in her nest and Edward, the emu was looking after them. We then had French with Madame Laura. Next, we had maths after recess. We were learning about turn around and undo facts. Turn arounds is where you flip the numbers you are adding. An undo fact is where addition can undo subtraction & vice versa. It is also called an inverse fact.

We end the day with STEM. We had to use given materials to build a famous landmarks. Lincoln built a pyramid and Conan built the leaning tower of Pisa

It was a good day and we had fun with Mr Saul.

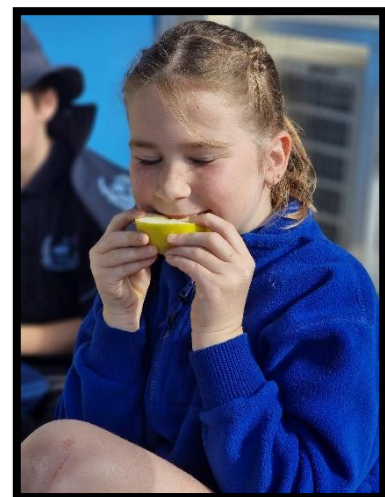
Newsletter-Parliament Excursion

On the 19th of June the year 6 and 5 in all the mallees went to Esperance High School. In Esperance they were learning more about parliament. Firstly, when we arrived the students got to call David from the WA parliament and he taught us a lot of information about all the parliaments mostly the whole of Austrian's parliament. In his presentation he taught us about the Rode and Mace that they call Rodney and Macey. So, at first Rodney was a pool cue but then the Queens came and decided to make the rode out of her jewels. She had all so decided to come with out knowing it was only half done and all the workers were very embarrassed. It had taken them up to 60 years to build the parliament in Canberra. Macey the Mace was used as a weapon 100 or so years before they decided to use it for the Canberra parliament. In Australia you must vote once you turn 18+ and if they find out you're not voting you get a fine. Kids can also have there say but can't vote, they may be able to talk to their parents to help decide though. In Australia there is Federal, State and Local parliaments. All the Student had also learnt about what those parliaments do.

At the end of the day we all had heaps and fun and we all went back to school.

During a cooking session involving lemons the students were asked if they liked the taste of lemons or not. Most shouted yes and that they loved lemons. Ms Hughes then asked which students had tried grapefruit before, as it tastes somewhat similar to lemons. All responded with they had never tried grapefruit before but were all very curious to try.

Whilst at Cascade, Mrs Sills walked around and had the Munghlinup students try Grapefruit (we only had one, not quite enough to go around). We had some mixed reactions to the taste. William and Conan enjoyed the taste so much they put the juice onto their sandwiches. Lincoln, Oscar and Izzy had complete opposite reactions whilst Hailey wasn't too fussed but still ate her entire piece. It was an interesting food experiment and the students have thoroughly enjoyed their cooking experiences with Mrs Ruth and Ms Hughes on Thursday afternoons. In the final 2 sessions, the students have explored how to make lemon cordial and which liquid words best for them.





Canberra Camp

Well what a great start we have had to our Canberra Camp experience. For most flying was a first time experience and for some students this is the first, and probably biggest sleepover they have ever had.

We began with meeting up in Perth Airport getting ready for our flight and ensuring everyone had a beanie and a lanyard for the Canberra experience. We said goodbye to our parents and then after what felt like the shortest wait time, we boarded our plane. Our flight took approximately 4 hours to arrive in Canberra where we were meet with a cold breeze. We were quick to find our bags and jump on the bus. Most of us were hungry and luckily we got to our rooms, dropped our bags and went for dinner where the menu was burgers and chips. We would like to say when we went to bed we were tired but the reality was slightly different.

Next morning we were up bright and early and down stairs for a hot breakfast (we could have cereal too but not many of us chose that). We headed to Parliament House where we saw some incredible artwork, Lego creation, had frozen Yoghurt, and went on the roof of Parliament House. After Parliament House we travelled on the bus to the War Memorial. We wish we could spend more time there. Before dinner we went bowling where we all had so much fun.

We are having a great time on camp and Tuesday is our snow day where most of us will see snow for the first time. Watch out for our next update in the next newsletter.



CONTRIBUTIONS & CHARGES 2023

CONTRIBUTIONS	AMOUNT
<p>DEFINITION: In accordance with the Department of Education Contributions, Charges and Fees Policy October 2007, schools can request up to a maximum contribution of \$60.00 for years K – 6. A contribution is voluntary and the funds are used towards the cost of materials, services and facilities used by students in the education program. Contributions collected at this school contribute to a number of items including (but not limited to):</p> <ul style="list-style-type: none"> • Photocopying for school work • Classroom resources, e.g. printer ink, paper, files, reading books • Physical education and art equipment • Required classroom texts 	<p>K- 6</p> <p>\$60.00</p>
CHARGES	AMOUNT
<p>DEFINITION: The term charges refers to the provision of extra cost optional activities which are parts of an education program and which contributions do not cover. All of the following are optional and if no payment is received, an educational activity with a similar outcome will be provided for that student. The School Council has approved all charges.</p>	
<p>Senior and Junior excursions</p> <p>Canberra Camp</p> <p>Yrs 3-6 Mallee Swim Camp</p> <p>Yrs PP-2 Swim Week</p> <p>Yr 6 End of Year Event</p> <p>Canberra Camp Deposit</p> <p>Canberra Camp Department Insurance</p> <p>This is the maximum that will be charged. Parents will be asked to pay as excursions/camps occur.</p>	<p>\$50</p> <p>\$2600</p> <p>\$400</p> <p>\$200</p> <p>\$75</p> <p>\$150</p> <p>\$25</p>
CULTURAL ACTIVITIES	AMOUNT
<p>Cultural Activities (MAX. COST PER STUDENT FOR THE YEAR)</p> <p>Cultural Activities are costed at 50% subsidy and 50% student funded. Examples of Cultural Activities are events such as visiting MusicaViva, Spare Parts Puppet Theatre, Aboriginal Dance Groups etc.</p>	<p>\$30</p>
<p>School Based Activities (MAX. COST PER STUDENT FOR THE YEAR)</p> <p>This can consist of the cost of food items for cooking, money for unbudgeted activities such as a visiting artist workshop etc.</p>	<p>\$20</p>
Graduation Clothing (Year 6 Students Only)	
<ul style="list-style-type: none"> • Graduation Polo • Leavers Jacket 	<p>\$60</p> <p>\$120</p>

Personal Items

These items (as per the list below) have been approved by the School Council as being required by the students for personal use in educational programs provided by the school. These items can be purchased through a supplier of your choice. Please refer to the booklist for each year level.

Payment Options

Payment of contributions, assist with the school budgeting and the purchase of resources for student use. Please consider full payment of the contribution as soon as possible. It is usual that charges are paid as events arise; e.g. swimming, excursions and incursions.

All contributions, charges and personal items have been endorsed and approved by the School Council.

Kick'ARTS

WORKSHOPS

Makuru
winter

WASTE WARRIORS
BEDAZZLED CHAIRS
Monday 3 July
10am-2pm 8+yrs

FELT NATIVE ANIMALS
Tuesday 4 July
10am-12noon 9+yrs

CLAY FAIRY HOUSES
Tuesday 4 July
1pm-3pm 10+yrs

WHALES & WATERCOLOURS
Wednesday 5 July
10am-12noon 6+yrs

PICASSO PORTRAITS
Thursday 6 July
10am-12noon 5+yrs

POTTERY PET BOWLS
Monday 10 July
10am-12noon 10+yrs

BEE HOTEL
Tuesday 11 July
1pm-3pm 8+yrs

WHIMSICAL WEAVING
Wednesday 12 July
10am-12noon 8+yrs

HERBAL ALCHEMY
Friday 14 July
10am-12noon 6+yrs

BOOK ONLINE! www.canneryartscentre.com.au



Department of Local Government, Sport and Cultural Industries
Department of Primary Industries and Regional Development

REGIONAL
ARTSWA

REGIONAL
arts
AUSTRALIA



ESPERANCE
AG FUND
Agriculture Investing in the Esperance Community



WESCARPADE 2023

A WEEK-LONG OUTBACK
ADVENTURE WITH A MISSION TO
HELP KIDS FACING CANCER.



13-21 OCTOBER 2023

WA'S **WACKIEST** AND **HAPPIEST**
OUTBACK MOTORING ADVENTURE.

Camp Quality wesCarpade is coming to a town near you! Come down, visit our wacky themed cars and help raise funds for children and families impacted by cancer. For more information visit www.wescarpade.org.au



Camp Quality
WESCARPADE

SCAN THE QR
CODE TO FIND
OUT MORE!



VISITING MUNGLINUP MONDAY 16 OCTOBER 2023



Department of
Local Government, Sport
and Cultural Industries



HORIZON
POWER



Esperance's

WINTER WONDERLAND

SNOW PIT ❄️ SNOW SLIDE
9AM-7PM 10AM-4PM

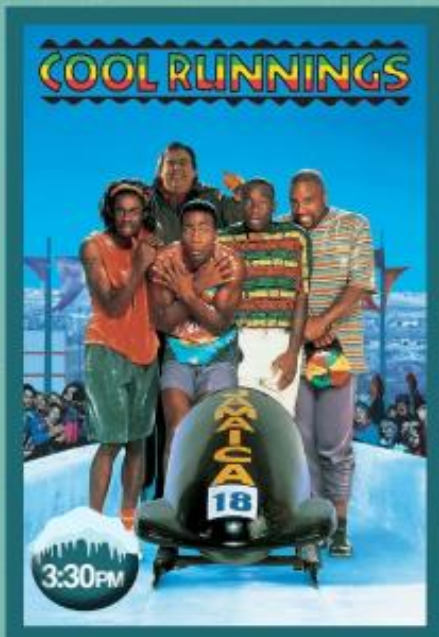
MOVIES ❄️ ENTERTAINMENT ❄️ MARKET STALLS ❄️ FOOD VENDORS

9AM - 7PM
15 JULY 2023
ESPERANCE CIVIC CENTRE

**FREE
EVENT!**



WINTER WONDERLAND



SHOWCASE ESPERANCE

Entry Information 2023



Showcase Esperance is open to Esperance residents. The winning design, as chosen by the Shire of Esperance, will be entered into the 2023 WALGA #showCase IN PIXELS competition and will be displayed with other WA Local Government designs on the digital tower at Yagan Square. Anticipated display dates are 4th-24th September.

A prize of \$500 of vouchers from one or more suitable local businesses will be awarded to the local winner. Category winners will receive a \$50 voucher to a local business. Winners must be able to collect their prize in person.

Entries are judged within below categories:

- a) Non-Digitally created Lower Primary: PP-Y3
- b) Non-Digitally created Upper Primary: Y4-Y6
- c) Non-Digitally created High School Y7-Y12
- d) Non-Digitally created Community Group or Non-Digitally created Non-Professional or
- e) Digitally created (all ages) or Video (all ages) or Professional

The Banners will be judged on:

- Creative composition & artistic merit
- Individuality, boldness and humour
- Use of colour and creativity
- Is it easy to identify something about Esperance?
- Can you read the ESPERANCE name?
- Some consideration will be given to relevance to WALGA Local Government Convention Theme: *LOCAL FUTURES*

Design Requirements

- The design should promote a bright, positive image of Esperance
- The design should use large, bright and bold images as minor details will not be seen when on display. Block colours with no pencil is preferred
- The word ESPERANCE must appear in large, clear lettering. Any written messages to be short, simple, large and clear
- As the Yagan Square digital tower faces the road, the following guidelines strictly apply:
 - No commercial advertising / brands to be displayed
 - No photograph/pictures of road networks or traffic.
 - Content cannot include colours or shapes that could be mistaken for traffic signals, signs or instruction signs.
 - Composition should not be chiefly made up of dark images which have poor daytime visibility.

Other Design Criteria:

- The design can be digitally created or physically created in any medium then digitized (photographed) or a video
- Portrait orientation is essential.
- Digitally created artwork should use the dimensions 896 pixels (height) by 650 pixels (width). DPI of a minimum of 300 is recommended.
- For non-digital creations, a minimum size of 1472mm (h) x 1067mm (w) is recommended to ensure details are captured. A ratio of height to width 1.38 (height): 1 (width) must be maintained.
- For non-digital creations: possible 'canvases' include: paper; floor/pavement/wall; fabric/canvas/paper. For non-digital creations: possible media includes paint, textas, mixed media,
 - collage materials, mosaic tiles, upcycled materials.
- Videos submissions must:
 - Be HD (1280px by 720px) or Full HD (1920px by 1080px) only
 - Be MP4 files only
 - Be exactly 30 seconds. Videos longer than this may be clipped, and videos shorter than this may not be approved for playback
 - Have English subtitles for all speech
 - Contain no: wind sounds; traffic sounds; or sudden/loud noises
 - Contain G-rated content only. No swearing, sexual reference or references to drugs alcohol, gambling, spoking or any illegal or antisocial behaviour
 - Contain no copyrighted content, including music.

SHOWCASE ESPERANCE

Entry Information 2023



Submitting your Entry

All entries must be submitted to shire@esperance.wa.gov.au via email by Wednesday 12th July.

Please use the subject heading: *Showcase Esperance* and submit your entry as an attachment.

Please do not submit physical artwork. For video entries, we are happy to accept a USB, or a link to a cloud-based storage (eg One Drive). Alternatively, the Shire can also provide a Next Cloud link to upload your video to - please call to arrange.

In the body of your email please include your:

- Name
- Contact phone number
- Category (see above listing)
- Confirmation that you are an Esperance resident
- Confirmation that the design submitted is original work and
- Confirmation that you have not included any copyrighted content
- Written explanation of how the work has been created and which medium has been used and the inspiration behind each element and/or the overall composition (Max 250 words).

By entering the competition, you agree to your artwork being used by the Shire of Esperance and the WA Local Government Association for display, community and promotional purposes.

If you have any questions please contact our Community Development Officer Rebecca Seinor on 9071 0678 or email community@esperance.wa.gov.au



Images: #showCase in Pixels 2019 and 2021 State Winners for each categories